



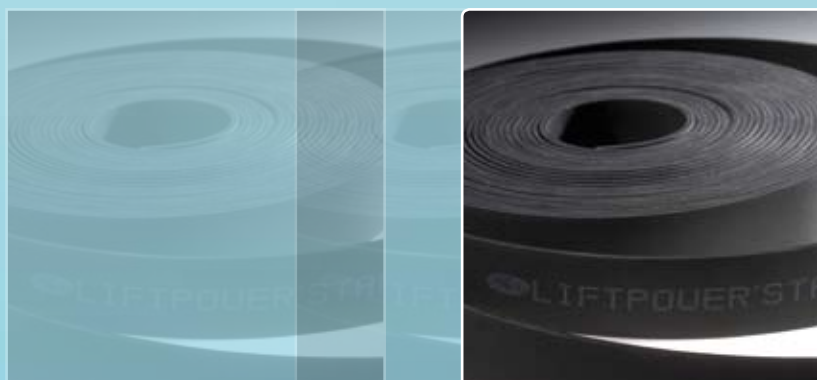
# LIFTPOWER™

***Open-ended flat belt  
for lifting and handling applications***

Gates LiftPower™ belts have been designed for optimum performance on lifting and handling applications to move platforms and/or weights. They are an ideal alternative to hydraulic cylinders in scissors-type lifting tables and to chains and steel cables in vertical transport of motor vehicles in high rise stores. LiftPower™ belts run on flat pulleys.

Through its flexible construction, this belt allows the use of smaller pulley diameters compared to traditional systems, resulting in space and cost savings. As this belt is maintenance-free, it does not require re-tensioning or lubrication, which again reduces costs considerably.

***More flexible, less space, less costs***



## **Open-ended flat belt**

### **Construction features**

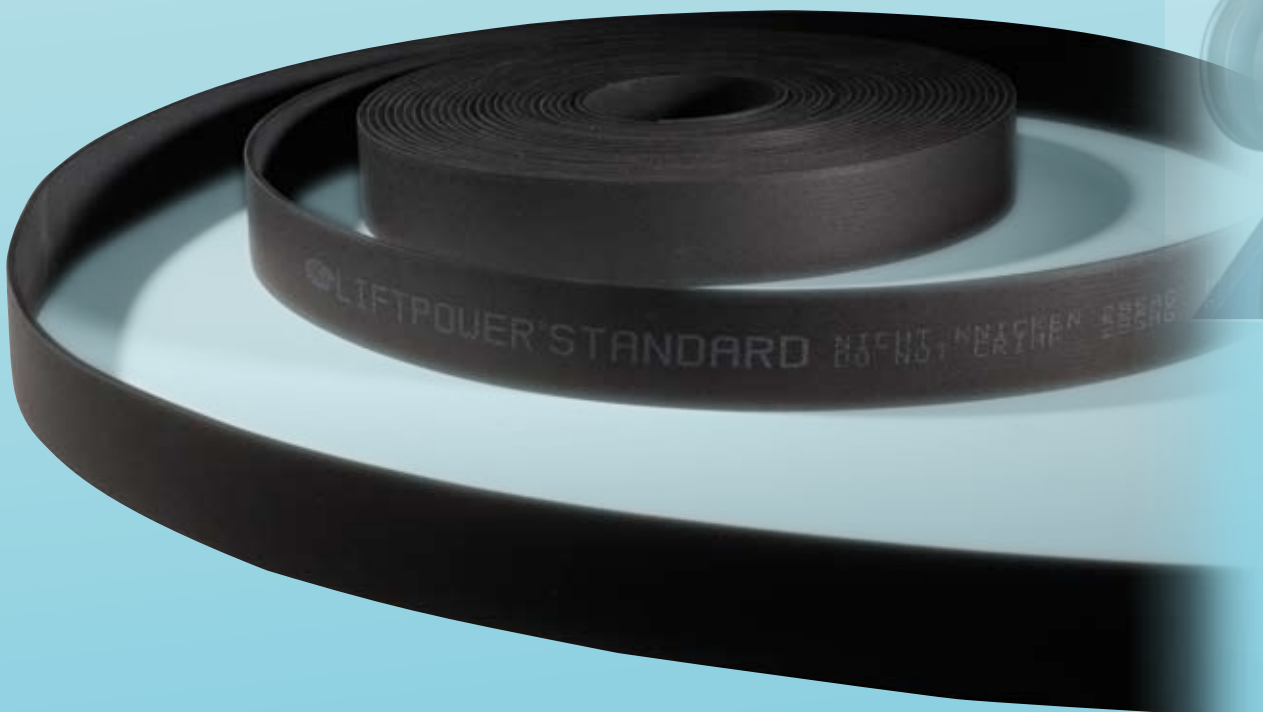


#### *Outside material:*

- Unique elastomeric compound
  - Durable
  - Smooth-running and higher speeds compared to chains and steel cables
  - Reduced noise level
  - Resistant to low and high temperatures: from -25°C up to +100°C
- Fabric on the back of the belt
  - Fixes the position of the cords
  - Protects the cords against external influences
  - Less friction / highly wear resistant

#### *Tension member:*

- Steel cord or high performance steel cord
  - Very low elongation
  - Increased flexibility compared to steel cables
  - Smaller pulley diameters can be specified
  - Space-saving



## Open-ended flat belt

### Additional benefits

- The reduced thickness tolerance of  $\pm 0.15$  mm provides uniform distribution of load when several belts are installed.
- Simple installation with clamping plates.
- Maintenance-free: no re-tensioning required, no lubrication needed.
- PowerPaint construction is available on request for usage in paint and varnish installations.
- High performance steel cord offers an up to 50% higher power capacity than standard steel cord through its superior cord construction.



**Open-ended flat belt****Sections and nominal dimensions**

	Width mm	Thickness mm
Standard	100	2.5
High performance	150	3.0

**Belt range**

Pitch code	Belt width mm	Steel cord	High performance steel cord
LL-LIFTP	25	•	
LL-LIFTP	30	•	•
LL-LIFTP	50	•	
LL-LIFTP	60	•	•
LL-LIFTP	75	•	
LL-LIFTP	90	•	•
LL-LIFTP	100	•	
LL-LIFTP	120		•
LL-LIFTP	150		•

All dimensions are non-stock items and available on request.

LiftPower™ ordering code is composed as follows:  
 Example: LIFTP-75-STEEL  
 LIFTP - LiftPower™  
 75 - Belt width (mm)  
 STEEL - Steel cord

Your distributor:



A Tomkins Company

[www.gates.eu](http://www.gates.eu)  
[www.gates.com](http://www.gates.com)