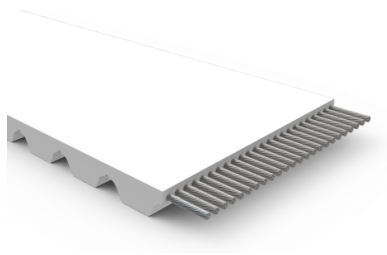




## GATES POLYURETHANE TIMING BELTS

### AT10-HF – HIGHLY FLEXIBLE AT10 BELT

Gates AT10-HF Timing Belts contain highly flexible steel cords, which give them greater flexibility than standard AT10 and allows for the use of smaller diameter pulleys. The AT10-HF is the perfect choice for drives where space is limited.



NEW!

#### PRODUCT DATA

Pitch	10 mm
Minimum Welded Belt Length	
Up to 100 mm	480 mm
> 100 mm	960 mm
Standard Roll Length (Tolerance ± 1%)	100 m
Standard Color	White
Cord	High Flexible Steel Cord
Minimum Number of Pulley Teeth $z_{min}$	12
Minimum Pulley Diameter	39 mm
Minimum Back Bend Diameter	100 mm
FDA / EU Approval	No
Polyurethane	R1 / 92 Shore A (STANDARD) R2 / 85 Shore A (OPTION)
Polyamide Fabric	NB / Polyamide on Back Side (OPTION) NT / Polyamide on Tooth Side (OPTION) NTB / Polyamide on Tooth and Back Side (OPTION)

#### TECHNICAL DATA

Standard Width [mm]	16	25	32	50	75	100	150
Ultimate Tensile Strength $F_{Break}$ [N] Average Value	7.785	12.975	16.435	26.815	40.655	54.495	82.175
Allowable Belt Tension $F_{1all}$ [N] Open Ended	2.074N	3.456	4.378	7.142	10.829	14.515	21.888
Allowable Belt Tension $F_{1all}$ [N] Endless Welded	1.037	1.728	2.189	3.571	5.414	7.258	10.944
Allowable Effective Tension $F_{Eall}$ [N] Minimum 15 Teeth are in mesh	1.651	2.580	3.302	5.160	7.740	10.320	15.480
Specific Belt Weight $m_{sp}$ [kg/m/mm]	0,0055						
Specific Belt Stiffness $c_{sp}$ [N]	518.400	864.000	1.094.400	1.785.600	2.707.200	3.628.800	5.472.000